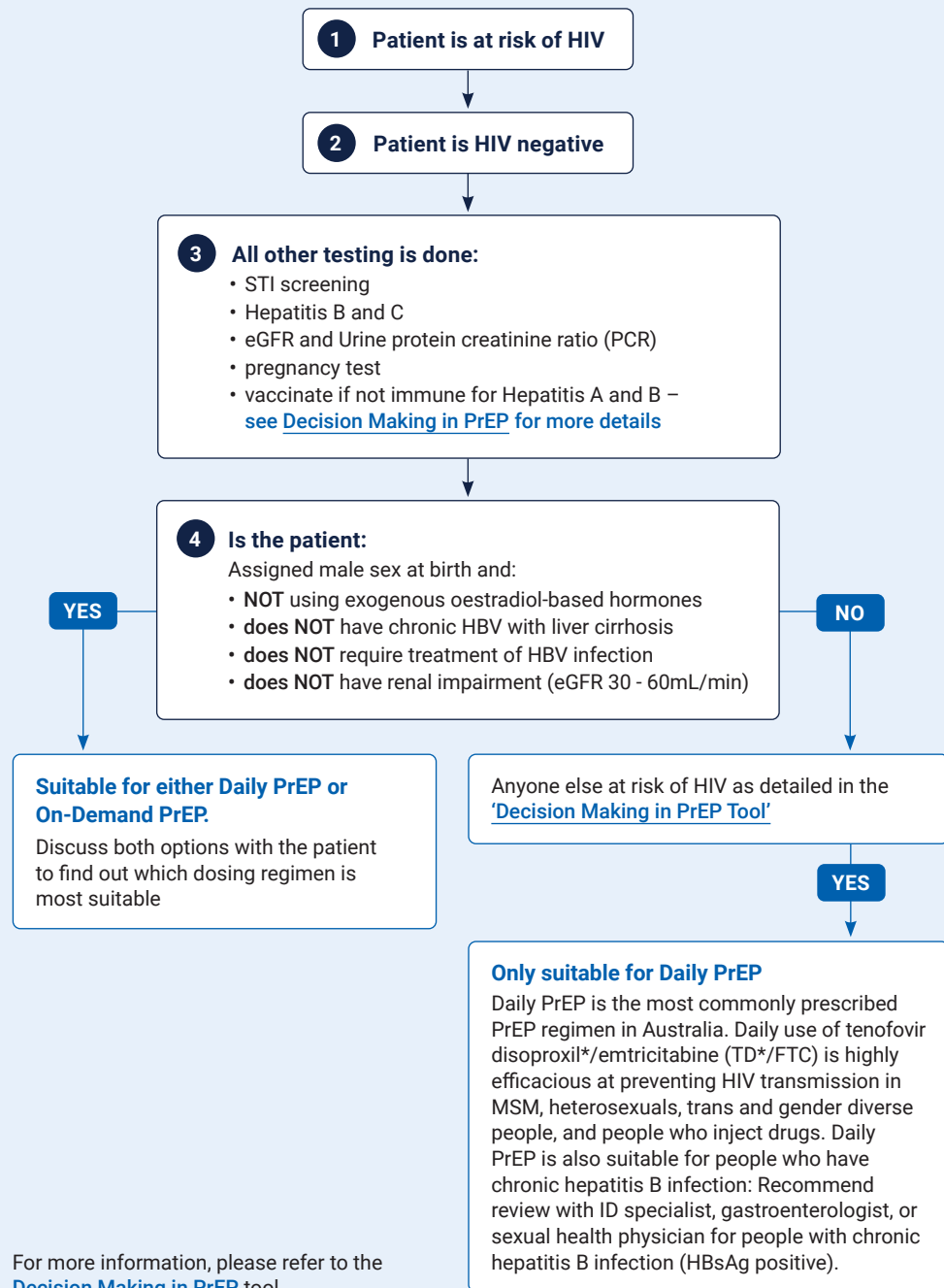


PREP DOSING GUIDE



For more information, please refer to the [Decision Making in PrEP](#) tool

PrEP DOSING REGIMENS

Daily PrEP



Providing Daily PrEP

- Initial Script to be provided to patient for daily, continuing, oral dose of co-formulated tenofovir and emtricitabine (TD*/FTC).

How to take Daily PrEP

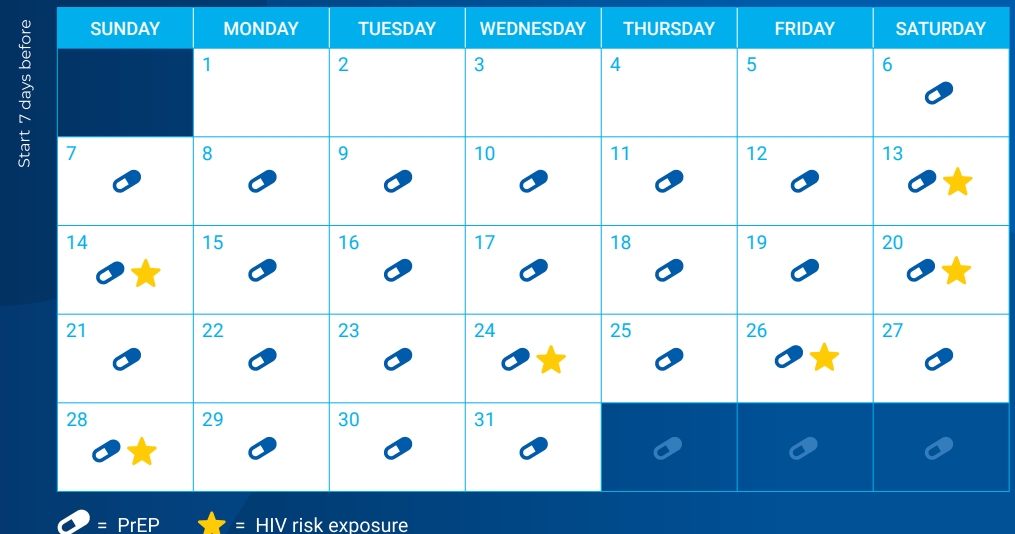
- 7 days of daily TD*/FTC prior to potential HIV exposure, to ensure adequate protection.
- Exception: Those who are suitable for on-demand PrEP can start PrEP by taking two tablets 2-24 hours before sex, followed by daily dosing.
- Take one tablet every day.

Monitoring while on Daily PrEP

- Every three months as noted in the National HIV PrEP guidelines. See the ['Decision making in PrEP' tool](#) for details.

Cessation of Daily PrEP

- National HIV PrEP Guidelines recommend continuation of daily PrEP for 7 days after last potential exposure to HIV.
- Exception: People who are suitable for On-Demand PrEP, whose risk of HIV is from sex, can stop taking Daily PrEP by taking two tablets after the last instance of sex. Take one tablet 24 hours, and one tablet 48 hours after sex.
- People living with hepatitis B may be at risk of acute hepatitis after cessation of daily PrEP. Cessation of Daily PrEP for people living with hepatitis B should be done in consultation with a specialist.



PrEP DOSING REGIMENS

On-Demand PrEP

On-demand PrEP can be used for short periods of time, or around single events of HIV exposure.

Who is On-demand PrEP suitable for?

- Suitable only for people assigned the male sex at birth with HIV risk from sexual exposure, who also:
 - are NOT using exogenous oestradiol-based hormones
 - do NOT have chronic HBV with liver cirrhosis
 - do NOT require treatment of HBV infection
 - do NOT have renal impairment (eGFR 30 - 60mL/min)
- As on-demand PrEP needs to be started at least 2 hours before sex, patients need to be able to predict sexual activity or delay sexual activity by two hours. If spontaneous sexual activity is more likely, the person may be more suited to a daily PrEP regimen that involves taking TD*/FTC on a daily basis during periods of risk.
- On-demand PrEP may also be suitable for people who have had side effects from daily PrEP such as nausea, diarrhoea or changes in renal function.
- On-demand PrEP is **not recommended** for people assigned female at birth, trans and gender diverse people, and people who inject drugs, due to lack of efficacy data in these populations.
- On-demand PrEP may be suitable for people living with hepatitis B under certain circumstances, please see the Special Clinical Considerations section of the National PrEP guidelines for more information concerning On-Demand PrEP for people living with chronic hepatitis B.

Providing On-Demand PrEP

- 90-tablet supply (note: this is not usually a 90-day supply for On-Demand PrEP) of TD*/FTC, supplied as per PBS / Australian PrEP guidelines.

How to take On-Demand PrEP

- If a person believes they may have an episode of risk, they take **two tablets** of PrEP (TD*/FTC) **2 to 24 hours before sex**.
- If sex occurs, the person takes:
 - One tablet** of TD*/FTC **24 hours after the first two tablets**, and
 - A fourth tablet 24 hours after the third tablet**.
- If sex occurs again during the 48 hours after the initial dose, then continue with **one tablet daily** until **48 hours after the last act of sex**.
- If sex is resumed **within one week** of the last tablet of PrEP, then a loading dose of **only one tablet** of TD*/FTC is required.
- If sex is resumed **more than 7 days** after the last PrEP tablet, then the **two-tablet loading dose** is required again, as noted above.

On-Demand PrEP Screening

- As with all PrEP regimens, **3-monthly screening is vital**. See the '[Decision Making in PrEP](#)' tool for more information.

Examples of on-demand PrEP when there are **more than 7 days** between the next exposure and the last tablet

SUNDAY	MONDAY	TUESDAY	WEDNESDAY	THURSDAY	FRIDAY	SATURDAY
	1	2	3	4	5  19:00 - 24 hours before	6  ★ 19:00
7  19:00	8  19:00	9	10	11	12	13
14	15	16	17	18  ★ 20:00 - 2 hours before	19  20:00	20  20:00
21	22	23	24	25	26	27
28	29  ★ 11:00 - 10 hours before	30  11:00	31  11:00			

 = PrEP ★ = HIV risk exposure

Examples of on-demand PrEP when there are **less than 7 days** between the next exposure and the last tablet

SUNDAY	MONDAY	TUESDAY	WEDNESDAY	THURSDAY	FRIDAY	SATURDAY
	1	2	3	4  19:00 - 20 hours before	5  ★ 19:00	6  19:00
7  19:00	8	9  22:00 - 24 hours before	10  ★ 22:00	11  ★ 22:00	12  22:00	13  22:00
14	15	16  ★ 16:00 - 5 hours before	17  16:00	18  16:00	19	20
21	22	23	24	25	26	27
28	29	30	31			