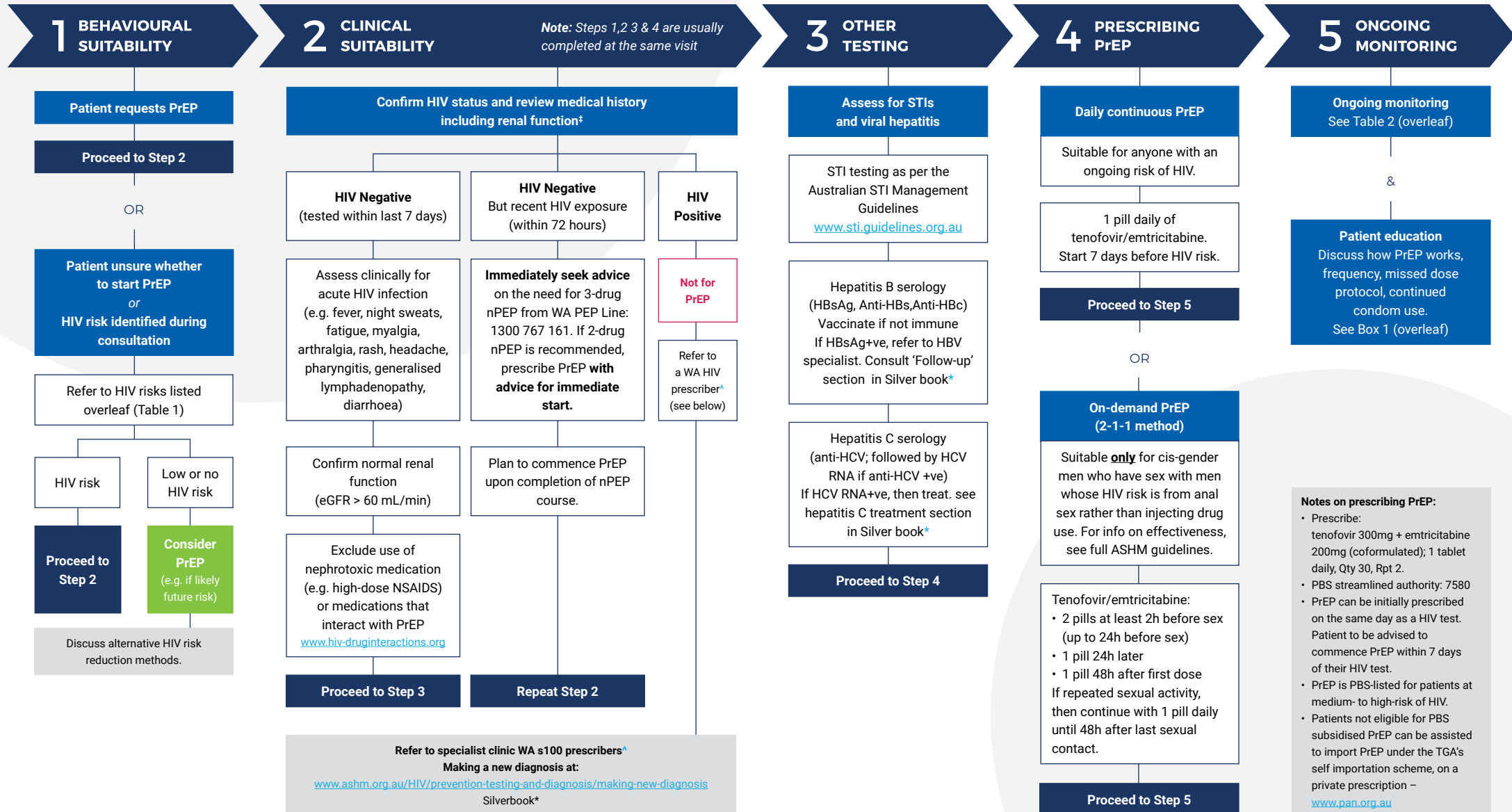




PRECIBING PrEP IN WESTERN AUSTRALIA



Government of Western Australia
Department of Health



Notes on prescribing PrEP:

- Prescribe: tenofovir 300mg + emtricitabine 200mg (coformulated); 1 tablet daily, Qty 30, Rpt 2.
- PBS streamlined authority: 7580
- PrEP can be initially prescribed on the same day as a HIV test. Patient to be advised to commence PrEP within 7 days of their HIV test.
- PrEP is PBS-listed for patients at medium- to high-risk of HIV.
- Patients not eligible for PBS subsidised PrEP can be assisted to import PrEP under the TGA's self importation scheme, on a private prescription – www.pan.org.au

TABLE 1: HIV RISK

Men who have sex with men (MSM)	Trans & gender diverse people	Heterosexual people	People who inject drugs
<ul style="list-style-type: none"> • Receptive CLI with any casual male partner. • Rectal gonorrhoea, rectal chlamydia or infectious syphilis. • Methamphetamine use. • CLI with a regular HIV+ partner who is not on treatment and/or has a detectable viral load. 	<ul style="list-style-type: none"> • Receptive CLI with any casual male partner. • Rectal or vaginal gonorrhoea, chlamydia or infectious syphilis. • Methamphetamine use. • CLI with a regular HIV+ partner who is not on treatment and/or has a detectable viral load. 	<ul style="list-style-type: none"> • Receptive CLI with any casual MSM partner. • A woman in a serodiscordant heterosexual relationship, who is planning natural conception in the next 3 months. • CLI with a regular HIV+ partner who is not on treatment and/or has a detectable viral load. 	<p>Shared injecting equipment with an HIV+ individual or with MSM of unknown HIV status.</p>

- The risks listed above confer a **high risk of HIV**, and hence should prompt a clinician to recommend that a patient start PrEP. However, this list is not exhaustive, and patients who do not report these circumstances may still benefit from PrEP.
- A person is considered to be at “high risk” if they had these risks in the previous 3 months, or if they foresee these risks in the upcoming 3 months.
- **If a partner is known to be living with HIV, on antiretroviral treatment and has an undetectable viral load, then there is no risk of HIV transmission from this partner.**

CLI: Condomless intercourse; MSM: Men who have sex with men; cis-men: assigned male at birth

BOX 1: PATIENT EDUCATION

- Discuss the role of condoms to prevent STIs, and emphasize role of regular STI testing.
 - Discuss safer injecting practices, if applicable.
 - Discuss PrEP adherence at every visit.
 - Ongoing monitoring every 3 months is required.
 - Discuss potential side effects, early (e.g. headache, nausea) and longer term (e.g. renal toxicity, lowered bone density).
 - Ask about nephrotoxic medications, eg NSAIDs.
- STOPPING PrEP:**
- Only cis-gender men who have sex with men (MSM) taking daily or on-demand PrEP can stop 48 hours after last exposure.
 - Non-MSM patients on daily PrEP should continue PrEP for 28 days after last exposure.
 - Patients who stop PrEP need a plan to re-start PrEP if their HIV risk increases again.

TABLE 2: LABORATORY EVALUATION AND CLINICAL FOLLOW-UP OF INDIVIDUALS WHO ARE PRESCRIBED PrEP

Test	Baseline (Week 0)	About day 30 after initiating PrEP (optional but recommended in some jurisdictions)	90 days after initiating PrEP	Every subsequent 90 days on PrEP	Other frequency
HIV testing and assessment for signs or symptoms of acute infection	✓	✓	✓	✓	✗
Assess side effects	✗	✓	✓	✓	✗
Hepatitis A serology, Vaccinate if non-immune	✓	✗	✗	✗	✗
Hepatitis B serology Vaccinate if non-immune	✓	✗	✗	✗	✓ If patient required hepatitis B vaccine at baseline, confirm immune response to vaccination 1 month after last vaccine dose
Hepatitis C serology	✓	✗	✗	✗	✓ 12 monthly but, more frequently if ongoing risk e.g. non-sterile injecting drug use and MSM with sexual practices that pre-dispose to anal trauma
STI (i.e. syphilis, gonorrhoea, chlamydia) as per Australian STI Management Guidelines *	✓	✗	✓	✓	✗
eGFR at 3 months and then every 6 months	✓	✗	✓	✗	✓ At least every 6 months or according to risk of CKD
Urine protein creatinine ratio (PCR) baseline	✓	✗	✓	✗	✓ Every 6 months
Pregnancy test (for women of child-bearing age)	✓	✓	✓	✓	✗

CKD: chronic kidney disease; eGFR: estimated glomerular filtration rate; PrEP: pre-exposure prophylaxis; PWID: people who inject drugs; STI: sexually transmissible infection

* <http://www.sti.guidelines.org.au/>